

THE EDENDALE EXPERIENCE: THINKING, LEARNING, CREATING

Kia ora, Kia orana, Namaste, Talofa lava, Malo e lelei, Ni hao ma, Fakaalofa lahi atu, Asalam alikum!

Principal's Message

Dear Parents and Caregivers,

We have had a great start to 2018. Welcome back to all our children and families, and welcome to Edendale to all the new children and families who have joined us this year. The classes have settled well and everyone is getting back into learning at school.

I would like to take this opportunity to acknowledge and thank the Edendale Post-School and Holiday Programme staff who have been organising and working in both programmes for many years at Edendale. Our heartfelt gratitude and thanks to Emma Henry, Karen Brunton, Carroll Spence, Mary Rodahl, Danny Houston, Kavita Kaushal and Abbie Ray for the time, organisation and care they have poured into Post-School and the Holiday Programme. From the beginning of 2018 Kelly Club is now organising our before and after school care programme. In April, Kelly Club will be organising the school holiday programme. Karen and Abbie will be working with Kelly Club in the holiday programme and Mary is working with Kelly Club after school.

We currently have some Year 5/6 classes at camp in Long Bay and the other Year 5/6 classes will be going on Monday. We are very pleased that the sun has come out today. I will be travelling up to visit Camp 1 today, and I will visit Camp 2 on Monday. A big thank you to Annette Herbert and the Tuakana teachers for all the planning and organisation to make the camps so successful.

We are looking forward to seeing everyone on Tuesday 27 Feb for the Meet The Teacher and Whanau Picnic 4:15 - 6:30pm. We will send out more details next week, but please add this date to your diaries. It is a great opportunity for you to meet the teachers, have a look inside your child's classroom, meet other parents and have some family fun.

Each term we have a focus on Edendale values. For Term 1 the focus is on kindness and caring. In Term 2 the focus will be resilience. In Term 3 the focus will be respect. In Term 4 the focus will be inclusiveness.

At the end of January the Edendale teachers attended two teacher only days. For the first day we joined with Wesley Primary and Wesley Intermediate for a workshop with Professor Christine Rubie-Davies. Christine is based in the Education Faculty at The University of Auckland. Christine presented her research on implementing high expectation principles in order to lift the achievement of all students. This research is part of the work we are doing with the Mt Albert Kahui Ako/Community of Learning. For the second day the teachers had a science focus with Peter Smith who is the education manager of the Science Roadshow and the manager of the Sir Paul Callaghan Science Academy. This workshop was a good mix of science theory with lots of practical experiments and activities that the teachers will be able to do during the year with their classes.

I am looking forward to seeing some of you at the Weetbix Kids TRYathlon on Sunday. Thank you to Katie Higgins and Mel McNeilly for co-ordinating this event. Look out for the Edendale banner.

Thank you so much to Morag Lavich who organised the parents' champagne breakfast on the first day back and to Nicole from Lord Kitchener. We really appreciate your support and acknowledgement.

Warm regards,

Carolyn 'Aukafolau



New staff members and student teachers being welcomed at our Powhiri on the first day of school

School Information • Programmes • Notices

Edendale Playground Winners (Positive Behaviour Tickets)

The following students were recently spotted displaying our value of KINDNESS & CARING during morning tea and lunch. Well done!

Minnie R.5

Sara R.5

Ally R.7

Jake R.8

Polly R.19

Frankie R.28

Lucy R.29

Chinese New Year at Edendale

We invite you to join us as we celebrate Chinese New Year at Edendale.

Date: Friday 23 February

Time: 10:00am

Venue: Edendale Playground

We will enjoy a short Chinese cultural performance from a community group 'The Colourful Arts Group', followed by a parade by our Edendale students. We hope you can join us on this special occasion!



Swimsation Swimming Lessons – Rapu, Ako and Tuakana Teams

Swimming lessons for **Rapu** and **Ako** teams will take place from Monday 19 February to Friday 2 March and for **Tuakana** team from Monday 5 March to Friday 16 March.

Your child will receive ten swimming lessons with Swimsation instructors to develop their water confidence, skill level and safety in and around the pool. All swimmers will be assessed at the first lesson to ensure that the instructors are catering for and enhancing your child's individual skill level.

What to bring:

Togs

Towel

Swimming cap (can be purchased from the school office at \$4)

Goggles (optional)

Change of clothes

Please see your child's class teacher for swimming times.

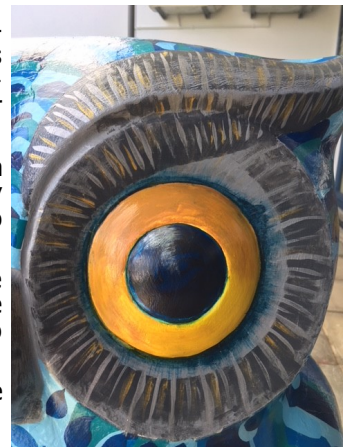
The Big Hoot

The Haier Big Hoot is a public art trail featuring 47 giant Owl sculptures (1.65m tall). From Saturday 3 March, the Owls will be displayed for nine weeks in public spaces, parks, malls and libraries across Auckland region. Each Owl has been turned into a bespoke piece of art by a Kiwi or international artist. At the end of the trail the Owls will be auctioned to fundraise for Child Cancer Foundation.

Keep an eye out for 60 smaller Owlets on the trail (90cm tall) - many decorated by students from Auckland schools including Edendale! Edendale's Owlet, Luna (pictured right), will be on display at Westfield St Lukes. Almost every student who was at Edendale in Term 4 last year helped to decorate our Owlet and wrote their name on their feather!

To celebrate the big reveal of the Edendale Owlet as well as others that will be on display at the centre, Westfield St Lukes will be holding their Big Hoot Arrival Party. The weekend will include cultural performances from local schools and free activities and giveaways for the whole family to be a part of.

For more information about The Big Hoot, check out the Facebook page www.facebook.com/theBigHoot2018



Garden to Table Volunteers

If you are looking for a way to get involved in our school community this year - our amazing Garden to Table Programme is looking for some regular volunteers to help in the kitchen or the garden. You don't have to be a chef or a green thumb - just be enthusiastic and willing to get stuck in! You even get to share amazing food with the students!!!

Pop up to the kitchen (beside the library and R.14a) and see Anna or Jodie, to see what involved, or email Anna (Kitchen Specialist) asutcliffe@edendale.school.nz, or Jodie (Garden Specialist) jlittle@edendale.school.nz

Musihub Guitar and Drum Lessons

Would you like your child to start learning music?

Musihub offers tuition of guitar and drums at Edendale school, onsite and during school hours. Taught by experienced, active musicians, the emphasis is on learning and having fun.

To inquire further, please get in touch with JP Carroll - johnpaulcarrollmusic@gmail.com / or text 022 103 6686

There will be a have a go session on the morning of Thursday 22 February at Edendale school between 8:00 - 8:30 AM, come along and say hi to the tutors and see if your child is keen to start learning music.

School Information • Programmes • Notices

Carolyn 'Aukafolau—Principal
Jenny Tong—Deputy Principal
Bridget Casse and Annette Herbert—Assistant Principals

Aroha Team Year 0/1	Kahu Team Year 2	Rapu Team Year 3/4	Ako Team Year 3/4	Tuakana Team Year 5/6
5 classes	5 classes	4 classes	5 classes	7 classes
Nikita Tapora Team Leader (R.28) Petra McDermott (R.23) Aimee Dale (R.24) Alan Waith (R.26) Fabienne Gillies (R.29)	Kate Roil Team Leader (R.16) Philippa Priest (R.17) Melody Yong (R.18) Latha Nayagam (R.19) Adrienne Kerin (R.21)	Charmaine Herman Team Leader (R.11) Sharon Topliss (R.3) Byron Stephenson (R.4) Julie Crombie (R.5)	Jonathan Jackson Team Leader (R.13) Grace Rogers (R.12) Mark Airey (R.14) Yana Dennett (R.14a) Ingrid Cheung (R.15)	Ritesh Chand Team Leader (R.8) Jamie Christensen (R.1) Amanda Ray (R.2) Tahi Vaneveld (R.6) Liese van Dam (R.7) Danisha Lal (R.9) Ben Koubaridis (R.10)

Sun hats and caps in Term 1

Please note that the children are expected to wear sun hats or caps in Term 1 and Term 4. It gets really hot during the day so we need students to wear sun hats or caps during playtimes, fitness and gardening sessions or during outside classroom activities.

Please provide your child/ren with sun hats or caps, it would be highly appreciated.

Let's be sun safe!



News from Edendale's PTA

Welcome Back

We hope everyone had a lovely holiday and are now ready for a great school year! We are looking forward to an outstanding year working with our community to raise money for the children of Edendale Primary School.

New PTA Members!!!!

Now would be a great time to come and join us – our **first meeting** of the year is on tonight! **15 February**. If you would like to join us, email us on pta@edendale.school.nz or just show up to the meeting. The meeting starts at **7:00pm** and is held in the meeting room (off the office foyer). Our meetings are usually held on the third Thursday of each month. Our next meeting will be held on **15 March**.

Volunteers

If you're unable to join the PTA itself, a great way to help out is by volunteering for one or two hours for an event. We are always on the lookout for helpers for each fundraiser, and this is a great way to get involved in a smaller capacity. If you're interested in putting your name down for one of the events below, just email us at pta@edendale.school.nz

Upcoming Events in Term 1:

BBQ - School Picnic/Meet the Teacher

Our first fundraiser of the year will be a BBQ at the annual School Picnic/Meet the Teacher event, which is being held on Tuesday 27 February.

We will be selling both Halal lamb and vegetarian sausages.

Colour Run – Sunday 4 March 3:30-5:00pm

We're holding this fantastic event again this year in Term 1 to align with the festival of Holi.

We need HELP:

Are you first aid trained and be willing to help run the first aid station?

Can you be a marshal or colour thrower - for an hour on the day?

If you are able to help with any of the above please email us pta@edendale.school.nz

As with last year children will run circuits around the school grounds and then run through a colour throw at the end of the race.

Entry fee is \$5 per child with a maximum of \$10 per family.

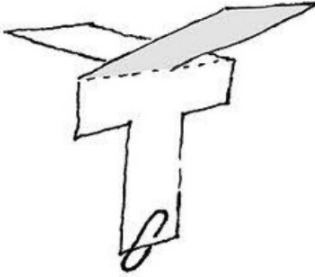
We will be sending out entry forms next week. These can be returned to the office.

Dates for later in the year:

School Disco – Friday 22 June. After last year's successful winter disco, we will again be holding it mid-year. Be sure to mark the date in your calendar, as we will be asking for volunteers for the evening closer to the time.

Quiz Night – Friday 7 September. Be sure to mark this one down in your diary! It's a great night of fun and is our biggest event of the year. We again will be calling for volunteers closer to the time.

Edendale PTA



Edendale Experiments

Science investigations have begun in R.2! We made paper helicopters and asked questions about them. We designed experiments to answer our questions and used predicting and observing skills in the process. There was lots of discussion about fair testing too. Here are a few of our questions.

Does the small helicopter or the big helicopter fall to the ground first? I saw the small one fall to the ground first. **Nathaniel**

What would be the difference if the wings of the spinner were folded? My observation was that when I threw them up in the air the folded winged one went down faster. I think this is because the folded sides are blocking most of the air from going beneath the wings. **Gowrie**

If we changed the direction of the wings would it spin the other way? I tried it lots of times and everytime I saw it did the same thing, when the wings were one way it went anti-clockwise and the other way it went clockwise. **Issie**

What would happen if you dropped helicopters on a fan? I saw that they started to fall but then they were lifted by the fan to stay in the air for 1 second and then came spinning back down to the side of the fan. **Nathanael**

What is the difference between adding a paperclip and not adding a paperclip? I saw that the one with the paperclip fluttered faster to the ground than the one without the paperclip. The one with a paperclip spun faster while the one without the paperclip hardly spun at all. Also the one with the paperclip had trouble staying upright. **Jemma R**

If you'd like to make one at home, click [here](#) for the template.



School Information

Mount Albert Grammar School is urgently looking for homestays for Terms 1 and 2. The weekly payment to homestay families is \$280.00 per week.

Please call on 8462044 extn 8163 or 8227.
Email - homestay@mags.school.nz

Or see the website for more information
<https://www.mags.school.nz/international/become-homestay-family/>



GYMNASTICS

Fantastic skill development
Fantastic strength building
Fantastic TUMBLING training
Fantastic flexibility & mental concentration
Fantastic coaches & equipment
Fantastic Fun!

Register on the www.GYMclub.co.nz website today!

Class starts Monday **19 February**, at lunchtime in the school hall.

The first lesson will be on Monday 19 February (due to the school hall being busy on Friday 16). The next lesson will be on Friday 23 February and then every consecutive Friday till the end of term.

"Classes are fantastic, more fun, more convenient, and I've learn't more in a term than I did in a year at my last club" Charlotte

The cost for the 8 week term is only \$95.

www.GYMclub.co.nz

0800 273368

Real Madrid Coaches in NZ April 2018

The world's most successful club is hosting 6 Clinics in regions across NZ. This is an incredible opportunity for children to appreciate football at its best.

- ◆ World class coaching
 - ◆ Suitable for boys and girls aged 8 to 15 of all abilities
 - ◆ Players will be grouped by ability and age
 - ◆ April school holidays 2018
 - ◆ Real Madrid Foundation Clinics training kit for every player
 - ◆ Individual player assessment from Real Madrid Clinic Head Coaches
 - ◆ 1 coach to every 12 players
 - ◆ Exclusive opportunity for an overseas camp to Real Madrid's 1st team training complex in Spain
- Register your child to be the first players to experience Real Madrid's world class coaching here in NZ.

[Player Clinic Registrations Now Open!](#)

For information or to make a booking for Before Care, After Care or the Holiday Programme, go to the Kelly Club website
www.kellyclub.co.nz/edendale

Edendale Term Dates 2018

Public holidays falling in school terms

Term 1: 7 February - 13 April

30 March - 3 April - **Good Friday, Easter Monday and Tuesday**

Term 2: 30 April - 6 July

Monday 4 June - **Queens Birthday**

Term 3: 23 July - 28 September

Term 4: 15 October - TBC

Monday 22 October - **Labour Day**

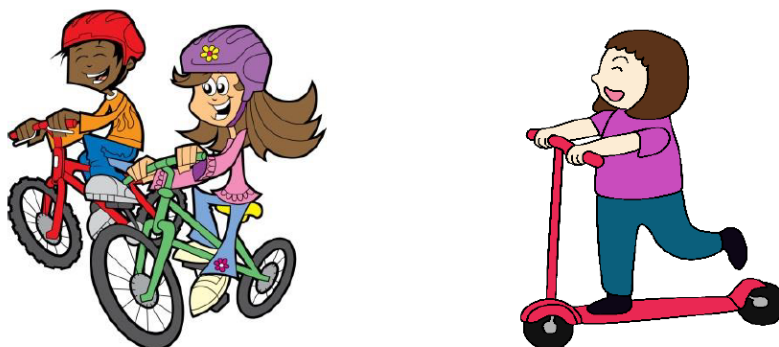
Board of Trustees

Next meeting will be held in the Meeting Room
Tuesday 20 February at 6:15pm
All welcome to attend.

Edendale PTA

Next meeting will be held in the Meeting Room
Thursday 15 February at 7:00pm
All welcome to attend.

Bike and Scooter Permission Slips



Dear Parents/Caregivers,

Please note that bike and scooter permission slips are available from the school office. Students who are interested in riding their bike or scooter to school are to get the permission slip completed and signed by their parents/caregivers and return to the school office. If you signed a bike or scooter permission slip last year, **you will still need to complete a new form for 2018.**

Please remember to 'Walk your Wheels'.

Bikes and scooters will be walked in and out of the school grounds and across the road/pedestrian crossing areas around the school.

Please note:

Bicycle:

- Year 5-6 students can ride their bike to school by themselves (depending on the individual circumstances relating to the skill of the rider, their road rule knowledge and the traffic environment)
- Students in Years 1-4 must be supervised/accompanied by an adult, to and from school

Scooter:

- Year 1-2 students must be supervised/accompanied by an adult, to and from school. All other students can ride their scooters keeping in mind good road sense, self-management and respect for others on the footpath
-

Please click on the link below to download the bike and scooter permission slips

Bike Permission Slip: [link here](#)

Scooter Permission Slip: [link here](#)

If you have any questions/queries, please email the school office office@edendale.school.nz or Mr Chand in Room 8 rchand@edendale.school.nz.