



Edendale
Primary School

26 September 2019

Newsletter at a glance

Highlights (more details are outlined in this newsletter)

- Quick reminders
- Book fair
- Photolife class, individual and sibling photos
- Production fundraiser
- EPro8 competition
- Zero to hero week winners
- Wheels and walking
- PTA news

Tēnā koutou katoa,

The third term is at an end and so is three quarters of the school year. It is hard to believe that we are at this point in the year with only one term to go. It was great to see so many of you at the parent/teacher conferences this week and thanks also for the positive feedback around receiving the *progress report* electronically this term. It was special to engage with the children of Rooms 6 and 7 earlier this week [and parents] where the children showcased their investigations from Term 3. A great example of **thinking, learning, creating**.

The Board newsletter this term will update you on the work done this year to review our Charter. Please keep an eye out for the newsletter. You will have noticed that the righthand side stairwell to the two-storey block is currently closed. This is due to an issue with some of the stairwell treads. These are being repaired over the coming break and will [hopefully] be back in action on day one of Term 4.

Staffing: we are in the midst of looking at staffing for 2020 and are pleased to announce that Shamin [one of our regular relief teachers] will be returning to Edendale in a fulltime role, Anna Swain [an ex-parent] will be joining us from 2020 as a teacher and is coming to us from May Road School. We have decided not to fill the two team leadership vacancies but to fill them with teachers for 2020 [this is due to the current teacher shortage and to allow us to review our middle leadership structures in 2020]. We will be joined by Yashika Dheda and Christopher Quincey. We are hopeful to have a new music teacher appointed towards the beginning of next term and will update you once this has been finalised. Jamie, who is currently on maternity leave, will be returning to Edendale in Week 2 next term and will take up a role in Aroha team until the end of 2019.

We would like to remind parents and caregivers of the process for dealing with issues related to your child/ren at school if they arise. Firstly you would contact the classroom teacher and second if required the team leader and then a senior leader.

The year six children are currently going through a process of deciding what their *graduation* will look like this year. We have decided to ask them what they would like and parents will be updated as this work continues. Please watch out for requests for help.

Last fortnight I received confirmation from the MoE [TeachNZ] that I have been awarded a ten-week paid sabbatical for 2020 and this will mean that I will take some time off school [dates to be decided]. The sabbatical involves some rest and recreation plus also an 'investigation' of current educational issues as related to our context and the wider system. I will update you further as details become clearer.

Have a restful and safe two weeks with your whānau and we will see you all on Monday 14th October for the first day of Term 4.

Ngā mihi.

Nā.

Jonathan
Principal | Tumuaki

Quick reminders

Lost property – any items that haven't been claimed by 3:30pm tomorrow will be donated to charity.

Porridge - Tickets for our production of 'Porridge' at 6:30pm on the 23rd and 24th of October are selling fast. It promises to be a super night with lots of laughs! Book your tickets now via Kindo to avoid disappointment! www.edendale.school.nz/kindo-school-shop

Yummy Apple stickers - Thank you to all the students and families collecting Yummy Apple stickers, we managed to collect 4500+ towards free DG sports gear. Please continue to collect stickers for Edendale, collection sheets can be printed out [https://www.yummyfruit.co.nz/wp-content/uploads/2019/02/SSP-pdf Sticker Collection Sheet compressed.pdf](https://www.yummyfruit.co.nz/wp-content/uploads/2019/02/SSP-pdf%20Sticker%20Collection%20Sheet%20compressed.pdf) or collect one from the office. Well done everyone!

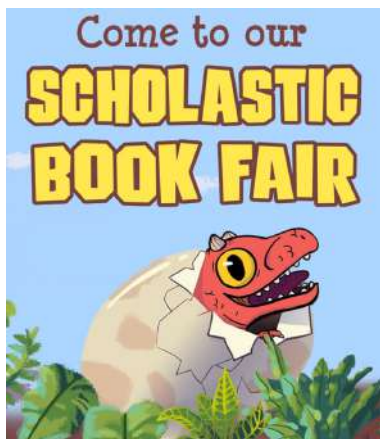
Dog safety - A gentle reminder to please mention to your child not to approach dogs they do not know, they may not be well socialised. Please do not interact, i.e. put your fingers, arms, hands through or over fences to pat dogs who are in their own territory (fenced in at home), on the way to and from school. Thank you for looking after our tamariki.

Book fair

The Scholastic Book Fair will be at our school from Tuesday 29th October to Friday 1st November. The fair is a celebration of reading with hundreds of fun, engaging, and affordable books for kids to discover. For this event we will be looking for parent volunteers to help set up or pack up the fair each day and to also help children with finding the perfect book. So if you are keen to join the volunteer team, keep a look out for further information in Week 1, Term 4.

We would be so grateful for your support!

Yana Dennett yana@edendale.school.nz



Book Fair

Tuesday 29th October to Friday 1st November

Edendale School Library

PhotoLife class, individual and sibling photos

Portrait, sibling and class photos will be taken on Wednesday, 23rd October. We will be working with PhotoLife using their Online Payment system. Please keep an eye out for more details regarding ordering and payment, following the photo shoot day. Sibling photograph order forms will be available from the office next term.

Production fundraiser

Please support our production fundraiser. Check out our silent auction items that will run both nights of our production, "Porridge," 23rd and 24th October. The proceeds will go towards production costs and the Edendale drama budget. We will also accept email bids at fleur@edendale.school.nz.

Auction 1 is for a large hamper. Thank you to our growing list of generous sponsors: Body Shop, Auckland Zoo, Warehouse Stationery, First Scene Fancy Dress, Sarah Rae (home baking and goodies), Edendale Eats, Jane Evans pilates and Westfield St Lukes.

Auction 2 is for two days at a spacious country home in Ohakune, near Mt Ruapehu. Fantastic skiing in winter and beautiful bush walks, bike rides and alpine crossings in summer. It is available for 2020 during school term time. Thank you Suzie Nielson for your kind donation.

https://www.homeaway.co.nz/holiday-accommodation/p20019356?uni_id=3720850



We are still looking for auction items so if you have any products, services or accommodation you could gift us please contact fleur@edendale.school.nz. A huge thanks to our amazing sponsors!

EPro8 competition

Last Thursday, Edendale entered two teams into the EPro8 year 5/6 competition. The Techno-bots (Miller, Callum, James and Guy Rm17) and the Llama-bots (Jemma R17, Ollie, Salvador and Sadie Rm18). They had a lot of fun, showed great teamwork and conquered really challenging tasks. The Techno-bots came third and will take part in the semi-finals in November. The Llama-bots came seventh, which was also a great achievement. Well done

to both of our teams for their commitment and hard work, both on the day and in the lead up to the competition. Thanks also to Nik for his engineering expertise! Here are a few photos from the day. – Amanda



Zero to hero week winners

Thanks everyone for helping make Zero to Hero Week such a popular event. Some pictures from Wheels Day are below. At this week's assembly, the classrooms with the lowest travel emissions for week 9 will be announced. We will also draw winners for children who brought zero waste lunches. Overall, it was the environment who was the biggest winner. You will find most ingredients for school snacks at bulk bins - PaknSave New North Rd and Binn Inn Onehunga have a great selection of lunchbox snacks. A tip is to wash out and reuse your bread bags from home. Go zero and be a hero!



Wheels and walking

Reducing our emissions at Edendale School is a priority. Let's celebrate Myah, Marissa and Ayla, Y5 and Kavita, Learning Assistant, Liam, Y1 and Alex, Y4 who walk or cycle to school.



Pictured left 'Here's Year 5 students Myah, Marissa and Ayla walking back home from school on a rainy day', says Kavita. Pictured right 'Liam and Alex like to cycle, scoot or walk to school almost every day,' says Jessie.

We would like to showcase your low emission travelling: walking, biking, scootering, busing and carpooling (with two or more families). This is an ongoing promotion so please send us your photo and description to fabienne@edendale.school.nz or fleur@edendale.school.nz Thank you.

friends of EDENDALE PRIMARY SCHOOL

Wow, it's the end of Term 3 already! We wish our Edendale whānau a restful, fun and safe school holidays. We look forward to seeing you back in Term 4.

Quiz Night

Just a note to say that we raised over \$10,000 at this year's Quiz Night! So thank you again to all those who supported this fundraiser.

Meetings

Our **next meeting** of the year is on the **17th of October**.

If you would like to join us, email us on pta@edendale.school.nz or just show up to the meeting. The meeting starts at **7:00pm** and is held in the meeting room (off the office foyer). We hold our meetings monthly, during term time. These are held every third Thursday of the month during term time and generally last for around an hour.

Our final meeting of the year will on 21st November, and will be our AGM.

Cards and Calendars

Edendale students are putting their final touches on some gorgeous artwork that will soon to be turned into greeting cards, calendars, sketch pads, mouse pads and diaries. These products make beautiful presents for friends and family, here and abroad. It'll be easier than ever to sort this year's Christmas presents! Online orders will be available early in Term 4. We will send out information about ordering online closer to the time.

Edendale PTA

Edendale term dates 2019		
Term 3	22 July – 27 September	
Term 4	14 October – 16 December	
Next BOT meeting		Tuesday 29 October
Next Friends of Edendale meeting		Thursday 17 October

Edendale term dates 2020 (note these may change slightly)		
Term 1	28 January – 9 April	Waitangi Day: Thursday 6 February Teacher Only Day: Friday 7 February Good Friday: Friday 10 April
Term 2	28 April – 3 July	Anzac Day Observed: Monday 27 April Queens Birthday: Monday 1 June
Term 3	20 July – 25 September	
Term 4	12 October – 10 December	Labour Day: Monday 26 October
2021 start day		2 February 2021

Out of zone enrolments

The Edendale Primary School Board invites applications from parents who wish to enroll their child at Edendale Primary School for 2020.

Enrolment at the school is governed by an enrolment scheme, details of which are available from the school office.

The board has determined that five places are likely to be available for out of zone students next year.

Applications are to be made in writing, addressed to the Principal at Edendale Primary School.

The deadline for applications is by midday Tuesday 15 October 2019.

If the number of out-of-zone applications exceeds the number of places available, students will be selected by ballot. If a ballot is required it will be held on 22 October 2019. Parents will be informed of the outcome of the ballot within three days of the ballot being held.

Instrumental music lessons with Lewis Eady at Edendale Primary!

Our students will have the opportunity to learn to play musical instruments at school with Lewis Eady (commencing Week 1 of next term). Lessons will take place during the school day.

Lewis Eady's beginner music programme **Musical Jam** - a fun, instrumental prep programme for children in Year 1 and 2, is a great way to get started!

For children in Year 3 and upwards, **30 minute lessons (group or one-on-one)** are available on **piano, keyboard, guitar and ukulele**. Singing, recorder, strings, woodwind, drum kit and brass will also be available should there be sufficient interest.

To secure a place for your child for music lessons commencing Week 1 of next term (Term 4, 2019) please visit www.lewiseady.co.nz and **enrol online by Friday 27 September 2019**.

We're happy to introduce Scott from Lewis Eady who will be taking band practice for Term 4. They will be held in the hall foyer on Thursdays, 11.30-12.00pm. Your first practise will be 17 October with Scott. Please remember to bring your instruments and music.

Scott Thomas joined Lewis Eady Music School 2010 and teaches woodwind, brass and guitar for us at Remuera Intermediate, Ponsonby Primary School, Kowhai Intermediate and at our Epsom studios. Scott recently returned to New Zealand after a year away in Europe where he was working as a full time touring musician with German band - Smalltape and US/German band - Alex's Hand. Scott completed a Bachelor of Music majoring in jazz saxophone in 2011 and has since been a regular performer around Auckland and New Zealand in bands (House of Shem, Fortress Europe, Queen City Big Band and more) and as a theatre musician (including Auckland Theatre Company's "Jesus Christ Superstar", "Guys and Dolls", "Amadeus" and Silo Theatre's "Peter and the Wolf"). As an instrumental tutor Scott teaches saxophone, flute and clarinet as well as guitar, ukulele and brass.



Aeon Music

MUSIC LESSONS AT EDENDALE SCHOOL

JOIN US AT OUR MUSICAL SHOWCASE!

FRIDAY 27TH | EDENDALE
SEPTEMBER | SCHOOL
9AM | HALL

Aeon Music provides quality music for all ages

Choose from a unique range of instruments

Located within Edendale School, your child will have easy access to stellar tutoring facilities during school hours

Piano | Clarinet
Violin | Trumpet
Flute | Trombone
Guitar | Saxophone

Your child will have the chance to play in bands and ensembles!

GROUP LESSONS	INDIVIDUAL LESSONS
Weekly lessons up to 3 students in a group setting	One on one weekly individual lessons
30 minutes per lesson \$180 per term*	30 minutes per lesson \$350 per term*

*prices are based on a 10 week term

APPLICATIONS OPEN
ENQUIRE TODAY!

contact us at
aeonmusiclimited@gmail.com

You can also register online <https://aeonmusic.co.nz>



SPRING holiday fun!

We are running **8 AWESOME FUN FILLED DAYS OF PERFORMANCE** over the holiday break and you don't want to miss out.

You will LOVE these Holiday Days! We **inspire Creativity** we **develop Confidence** and we **build Character** with every session we offer. You'll be grouped with kids the same age and you will have an absolute blast!

- All days run from 9am - 4pm.
- Wear comfortable clothes.
- Children will not be taken off site.
- Pack lunch, morning and afternoon snacks and a drink.

**BOOK TODAY at www.pform.nz
0800 PFORMNZ (736 766)**
These days quickly fill up so make sure you book today!

milford

contact Anna on 021447815
anna@pform.nz

mt eden

30 Sept, 1 Oct & 2 Oct
contact Grace on 0278678115
grace@pform.nz

orewa & red beach

8 Oct & 10 Oct
contact Gracie on 0212166652
gracie@pform.nz

remuera

7 October, 8 October & 9 October
contact 09 476 4045 info@pform.nz





SCRATCHPAD
TECHNOLOGY LEARNING CENTRES

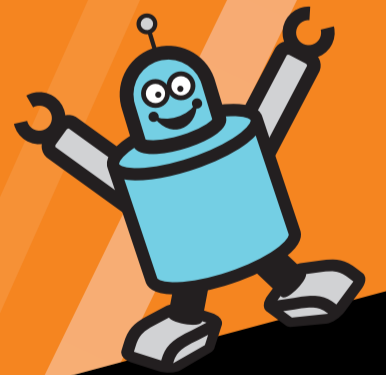
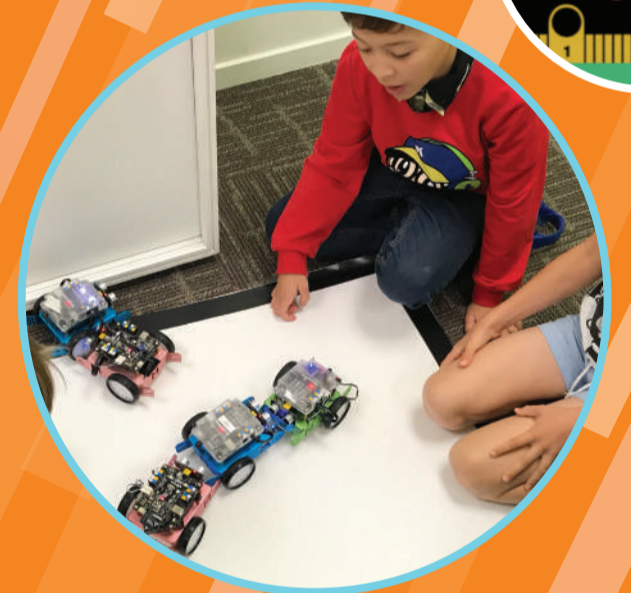
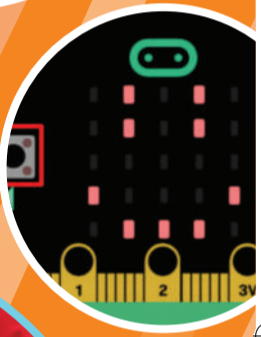
**30 SEPTEMBER
- 11 OCTOBER**

HOLIDAY PROGRAMMES

➔ GET YOUR KIDS EXCITED ABOUT TECHNOLOGY WITH THESE 12 AWESOME HOLIDAY PROGRAMMES



- + Robotics using Edison
- + Minecraft Modding
- + Android Apps
- + Graphic Designing
- + 3D Printing
- + Microbit
- + Python
- + HTML/CSS
- + Makey Makey
- + Robotics using Mbot
- + Roblox Programming
- + Let us Code



DON'T MISS OUT, BOOK NOW!
SCRATCHPAD.CO.NZ

SCRATCHPAD ST LUKES
12/1 WAGENER PLACE, MT ALBERT
INFO@SCRATCHPAD.CO.NZ | PHONE 09 815 0825



Mt Albert Tutoring Centre

AFFORDABLE EXCELLENCE



Y1 to Y13

- MATH | CRITICAL THINKING & PROBLEM SOLVING |
- ENGLISH | GRAMMAR & WRITING |
- DRAWING | 5+ | SKETCH | WATERCOLOUR |
- CHINESE | HANYU PINYIN | READING & WRITING |

CALL US TO SIGN UP NOW

022 645 8491

myunieducationgp@gmail.com

www.myunitutoring.com

30 Sept – 11 Oct 2019

022.645.8491
myunieducationgp@gmail.com
www.myunitutoring.com

Full day **\$50/day**
Half day* **\$30/day**

2A Wagener Place, Mt Albert, Auckland

MON, 30 Sept 2019	TUE, 1 Oct 2019	WED, 2 Oct 2019	THU, 3 Oct 2019	FRI, 4 Oct 2019
9 – 12 noon activities 12 – 1 pm Lunch break 1 – 3 pm CHINESE lesson	9 – 12 noon DRAWING 12 – 1 pm Lunch break 1 – 3 pm Maths lesson	9 – 12 noon activities 12 – 1 pm Lunch break 1 – 3 pm MATHS lesson	9 – 12 noon activities 12 – 1 pm Lunch break 1 – 3 pm ENGLISH lesson	9 – 12 noon activities 12 – 1 pm Lunch break 1 – 3 pm MATHS lesson
MON, 7 Oct 2019	TUE, 8 Oct 2019	WED, 9 Oct 2019	THU, 10 Oct 2019	FRI, 11 Oct 2019
9 – 12 noon activities 12 – 1 pm Lunch break 1 – 3 pm MATHS lesson	9 – 12 noon DRAWING 12 – 1 pm Lunch break 1 – 3 pm English lesson	9 – 12 noon activities 12 – 1 pm Lunch break 1 – 3 pm MATHS lesson	9 – 12 noon activities 12 – 1 pm Lunch break 1 – 3 pm ENGLISH lesson	9 – 12 noon activities 12 – 1 pm Lunch break 1 – 3 pm MATHS lesson

Notes: available program: HALF DAY from 9-12 noon (morning session) OR 12 – 3 pm (afternoon session) and FULL DAY from 9 – 3pm.

No lunch and afternoon tea provided. Please bring your own lunch. No exchanging food with friends.

Space filling
UP
QUICKLY!